

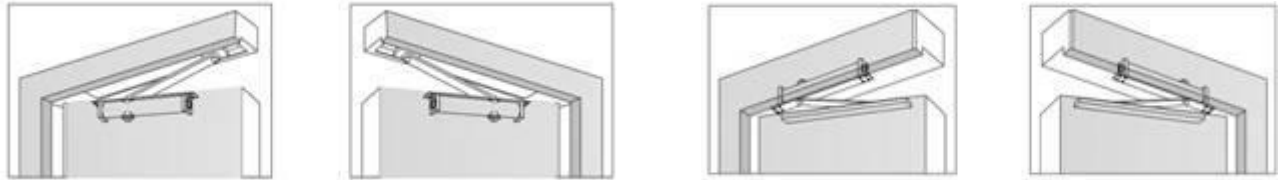
## D71 SERIES CONCEALED CAM ACTION SIZE 3-6 DOOR CLOSERS



### STANDARD FEATURES

- **Certification:** Non
- **Spring Power:** Adjustable Size 3-6
- **Durability:** 500,000 cycles above
- **Function:** Adjustable Closing speed  
Adjustable Latching speed
- **Installation type:** Concealed with sliding track arm
- **Type:** Embedded
- **Max. Opening:** 120 °
- **Pressure relief valve:** Yes
- **Mechanism:** Cam action
- **Hand of door:** Non handed
- **Materials of Body:** Die-Cast Iron
- **Materials of guide rail and Main Arm:** 6061, Steel
- **Materials of Spring :** 60Si2Mn
- **Backcheck:** NO
- **Hold open:** Yes
- **Delayed Action:** NO
- **Bearing:** Full complement bearings for long durability
- **Product Description:** Efficient cam and roller design
- **Finish:** Silver, Brown, White,Black, Others upon request.
- **Warranty:** 5 Years
- **Minimum door thickness:** Wooden door:52mm  
Metal door:48mm

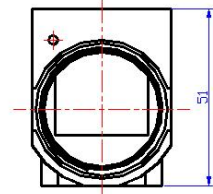
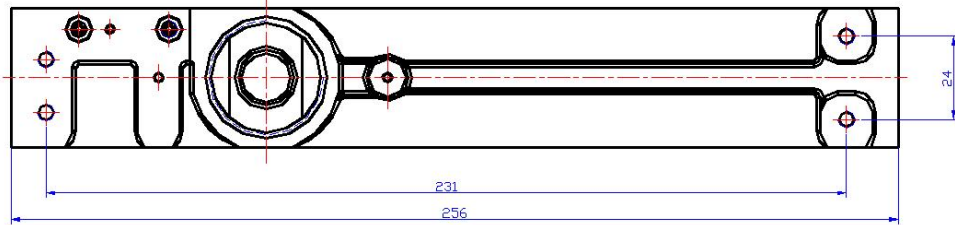
**AVAILABLE INSTALLATION TYPE:**



Model #	Spring power	Recommended Door Weight	Recommended Max. Door Leaf Width (mm )	Notes
D71	3-6	40-150 KGS	950-1500 mm	Slide track arm

\*Note:Open the door to the desired angle,and then tighten the set screws in the slider combination.If the HO function is not needed,loosen the fixing screws.

**PRODUCT DIMENSIONS:**



\*Rapid decrease in opening force makes doors easy to open, yet provides maximum closing force at the latch.  
 D71 can be inverted to install the closer body in the frame.Invisible when door is closed.